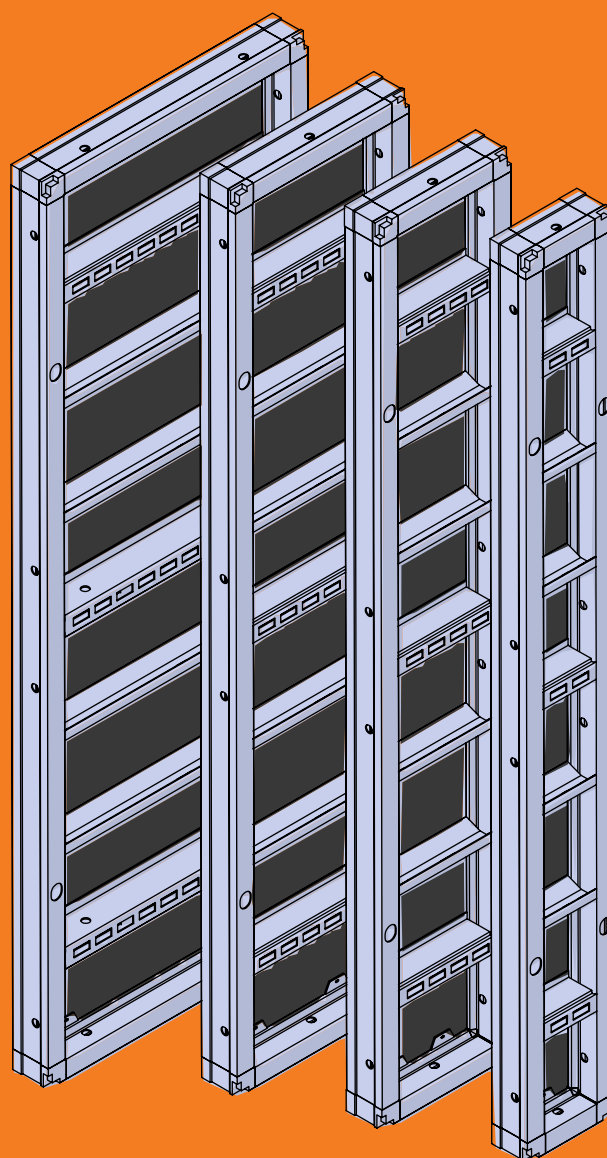


ŠITUM FORMWORK

# DokMax Alu formwork



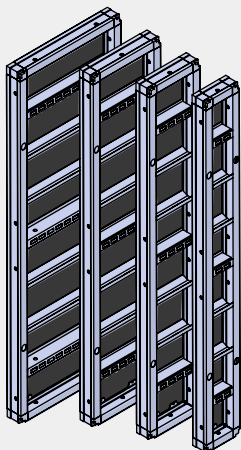
[www.oplate-situm.com](http://www.oplate-situm.com)



# DokMax Alu formwork

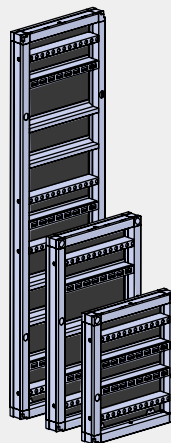
Formwork system **DokMax Alu** is a complete system that includes the associated parts and enables the perfect quality of concrete constructions.

### DokMax Alu panel 2700



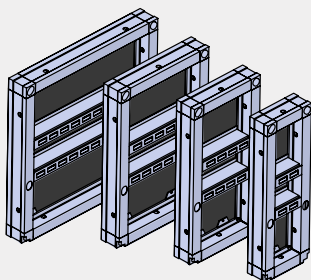
code	dimensions (m)	weight (kg)
G 128	0,90 X 2,70	69,00
G 127	0,75 X 2,70	56,00
G 126	0,60 X 2,70	47,00
G 125	0,55 X 2,70	44,00
G 124	0,50 X 2,70	42,00
G 123	0,45 X 2,70	40,00
G 122	0,30 X 2,70	30,00

### DokMax Alu panel uni



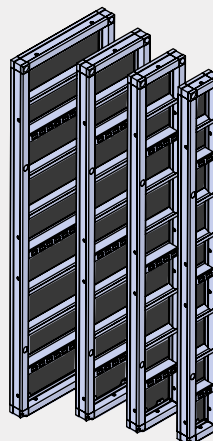
code	dimensions (m)	weight (kg)
G 134	0,75 x 2,70	64,00
G 133	0,75 x 1,35	33,00
G 132	0,75 x 0,90	26,00
G 472	0,75 X 3,00	70,00

### DokMax Alu panel 900



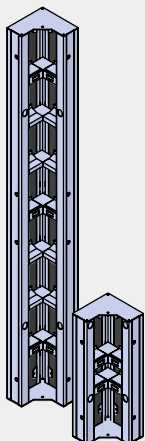
code	dimensions (m)	weight (kg)
G 121	0,90 X 0,90	25,00
G 120	0,75 X 0,90	21,00
G 119	0,60 X 0,90	17,00
G 118	0,55 X 0,90	16,80
G 117	0,50 X 0,90	16,00
G 116	0,45 X 0,90	15,00
G 115	0,30 X 0,90	11,00

### DokMax Alu panel 3000



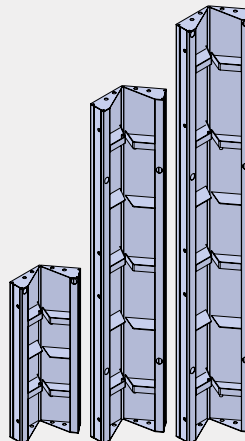
code	dimensions (m)	weight (kg)
G 464	0,75 X 3,00	64,50
G 465	0,60 X 3,00	54,00
G 466	0,55 X 3,00	50,50
G 467	0,50 X 3,00	48,00
G 468	0,45 X 3,00	43,00
G 469	0,30 X 3,00	34,00

### DokMax Alu corner



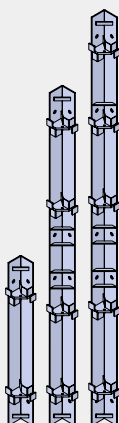
code	dimensions (m)	weight (kg)
G 138	2,70	51,00
G 137	0,90	19,00
G 473	3,00	53,00

### DokMax hinged corner



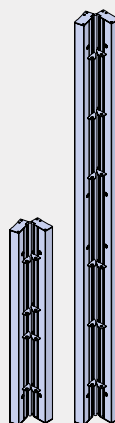
code	dimensions (m)	weight (kg)
G 092	3,30	129,00
G 091	3,00	105,00
G 090	2,70	57,00
G 089	1,35	41,00

### DokMax external corner



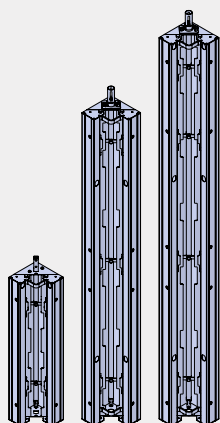
code	dimen- sions (m)	weight (kg)
G 088	3,30	58,00
G 087	3,00	52,00
G 086	2,70	47,00
G 085	1,35	23,00

### DokMax hinged external corner



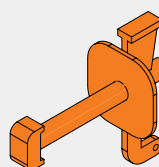
code	dimen- sions (m)	weight (kg)
G 404	3,30	64,50
G 402	2,70	52,00
G 405	1,35	27,00
G 406	0,90	17,00

### DokMax stripping corner



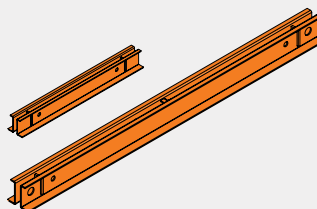
code	dimen- sions (m)	weight (kg)
G 099	3,30	210,00
V134	3,00	190,00
G 098	2,70	170,00
G 097	1,35	90,00

### DokMax wedged clamp



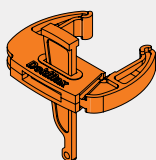
code	weight (kg)
V 034	1,50

### DokMax rail 0,90 and 1,50



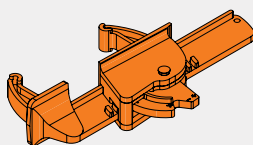
code	dimensions (m)	weight (kg)
G 02	0,90	10,00
G 03	1,50	16,00

### DokMax quick acting clamp



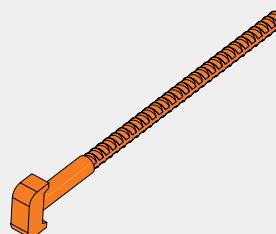
code	weight (kg)
V 031	3,30

### DokMax multi-functional clamp



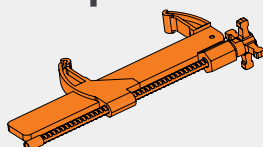
code	weight (kg)
V 032	5,20

### DokMax T-bolt



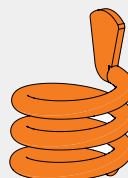
code	weight (kg)
V 031	0,69

### DokMax multi-functional adjustable clamp



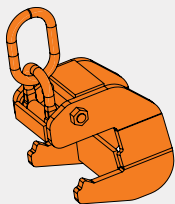
code	weight (kg)
V 036	5,30

### DokMax super coil



code	weight (kg)
V 501	0,10

### DokMax lifting hook



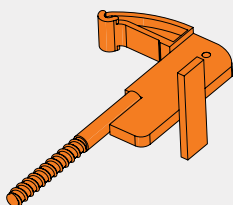
code	weight (kg)
V 033	10,55

### DokMax super bolt



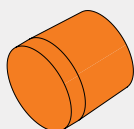
code	weight (kg)
V 510	0,30

### DokMax stop-end tie



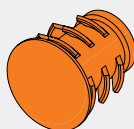
code	weight (kg)
V 240	1,50

### DokMax UNI plug



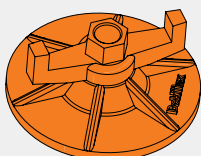
code	weight (kg)
V 054	0,02

### DokMax panel plug



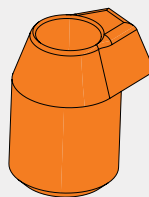
code	weight (kg)
V 054	0,03

### DokMax superplate



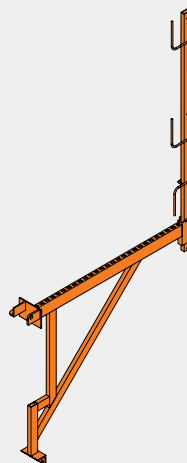
code	weight (kg)
V 029	0,91

### DokMax stacking cone



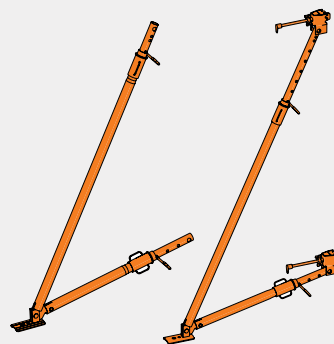
code	weight (kg)
V 525	0,04

### DokMax bracket 090



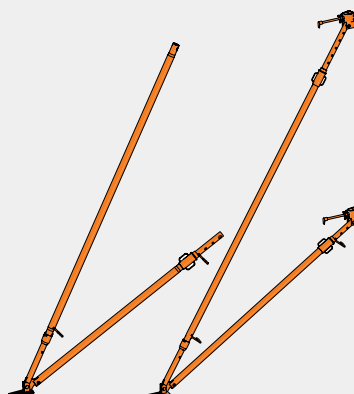
code	weight (kg)
G 431	12,00

### DokMax panel strut 340

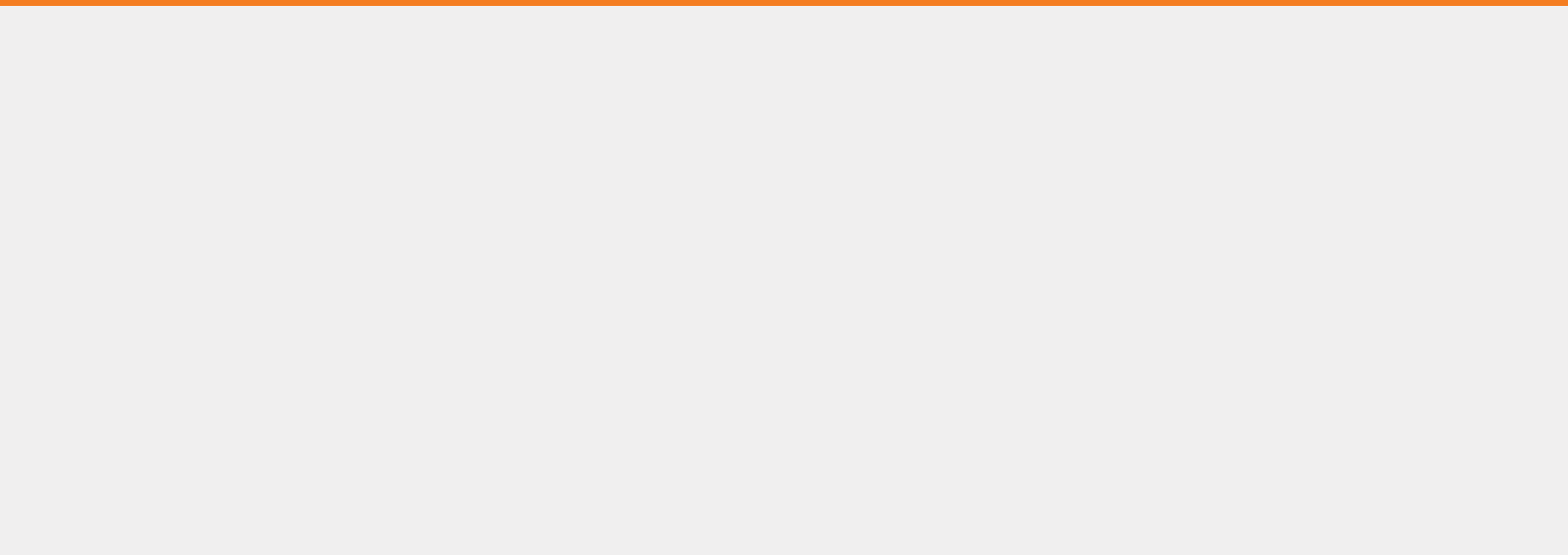


code	weight (kg)
V 028	31,00

### DokMax panel strut 540



code	weight (kg)
V 114	48,00





[www.oplate-situm.com](http://www.oplate-situm.com)

**ŠITUM FORMWORK  
ZAGREB WAREHOUSE**

☎ +385 (0)1 2090 333

☎ +385 (0)99 3344 722

✉ [prodaja@oplate-situm.com](mailto:prodaja@oplate-situm.com)

📍 Oreškovićeve 12/A, 10000 Zagreb

Working hours:

MON-FRI 08:00-16:00

**ŠITUM FORMWORK  
SPLIT WAREHOUSE**

☎ +385 (0)21 220 220

✉ [split@oplate-situm.com](mailto:split@oplate-situm.com)

📍 Solinska 49 (Dujmovača),  
21000 Split

Working hours:

MON-FRI 07:00-15:00

**ŠITUM FORMWORK  
PRODUCTION PLANT CISTA PROVO**

☎ +385 (0)21 720 087

✉ [ured@oplate-situm.com](mailto:ured@oplate-situm.com)

✉ [info@oplate-situm.com](mailto:info@oplate-situm.com)

📍 Ćubića put 12, 21256 Cista Provo

Working hours:

MON-FRI 08:00-16:00