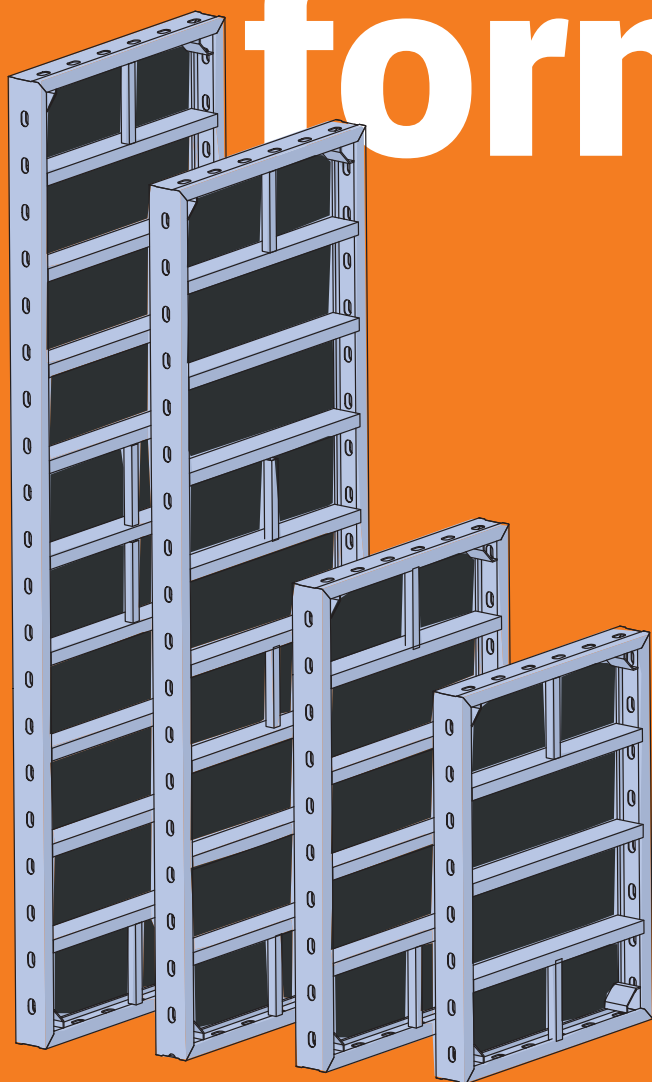
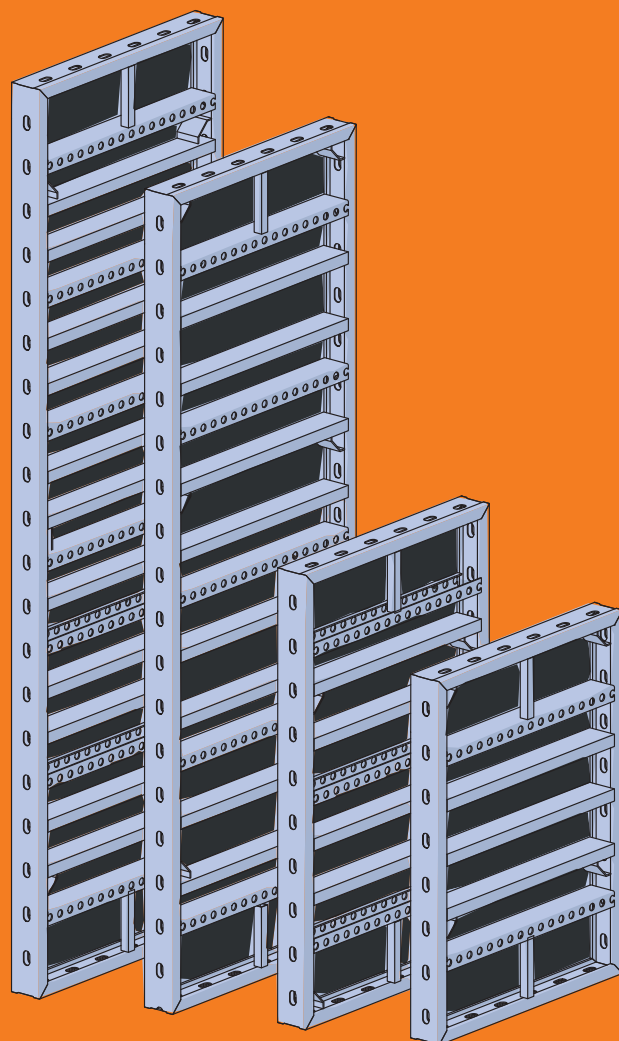


ŠITUM FORMWORK

DokMaxEco formwork



Standard DokMaxEco panel



Uni DokMaxEco panel

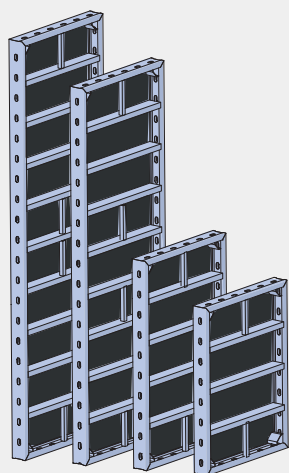


www.oplate-situm.com

DokMaxEco formwork

The extra-light formwork system **DokMaxEco** is a complete system that includes the associated parts and enables the perfect quality of concrete structures without the use of a crane.

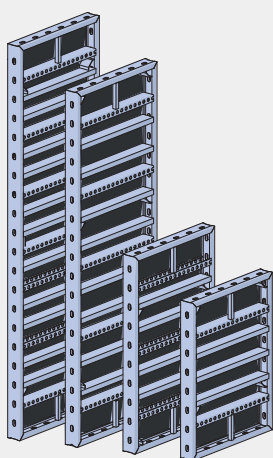
DokMaxEco standard panel



dimensions	weight (kg)
0.90 x 3.00 m	85.58
0.75 x 3.00 m	75.39
0.60 x 3.00 m	65.10
0.45 x 3.00 m	53.66
0.30 x 3.00 m	43.47
0.90 x 2.70 m	77.18
0.75 x 2.70 m	67.94
0.60 x 2.70 m	58.59
0.45 x 2.70 m	48.41
0.30 x 2.70 m	39.17
0.90 x 1.50 m	45.68
0.75 x 1.50 m	40.32
0.60 x 1.50 m	34.86
0.45 x 1.50 m	28.46
0.30 x 1.50 m	23.10
0.90 x 1.20 m	37.59
0.75 x 1.20 m	33.18
0.60 x 1.20 m	28.67
0.45 x 1.20 m	23.52
0.30 x 1.20 m	19.11

Available options:
 - plasticized
 - hot galvanized
Other dimensions on request.

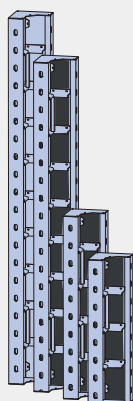
DokMaxEco Uni panel



dimensions	weight (kg)
0.90 x 3.00 m	117.42
0.75 x 3.00 m	95.24
0.90 x 2.70 m	98.18
0.75 x 2.70 m	85.47
0.90 x 1.50 m	57.65
0.75 x 1.50 m	50.19
0.90 x 1.20 m	44.73
0.75 x 1.20 m	38.96

Available options:
 - plasticized
 - hot galvanized
Other dimensions on request.

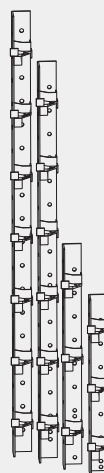
DokMaxEco internal corner



dimensions	weight (kg)
0.20 x 3.00 m	61.43
0.20 x 2.70 m	54.93
0.20 x 1.50 m	32.16
0.20 x 1.20 m	26.62

Available options:
 - plasticized
 - hot galvanized
Other dimensions on request.

DokMaxEco external corner



dimensions	weight (kg)
3.00 m	20.80
2.70 m	19.02
1.50 m	10.35
1.20 m	8.68

Available options:
 - plasticized
 - hot galvanized
Other dimensions on request.

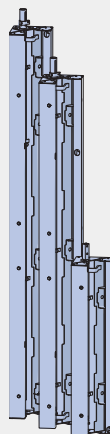
DokMaxEco internal movable corner



dimensions	weight (kg)
0.20 x 1.50 m	39.94
0.20 x 1.20 m	33.04

Available options:
 - plasticized
 - hot galvanized
Other dimensions on request.

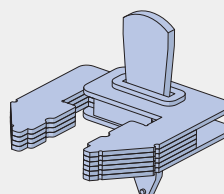
DokMaxEco internal movable corner



dimensions	weight (kg)
0.30 x 3.00 m	151.83
0.30 x 2.70 m	135.14
0.30 x 1.50 m	82.01

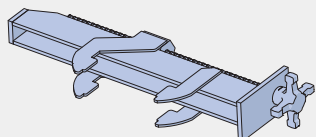
Available options:
 - plasticized
 - hot galvanized
Other dimensions on request.

DokMaxEco RU clamp



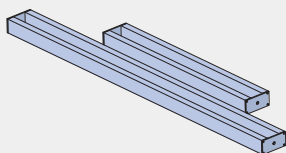
weight (kg)
1.47

DokMaxEco adjustable clamp



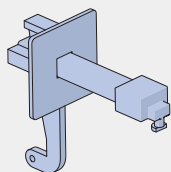
weight (kg)
3.79

DokMaxEco rail



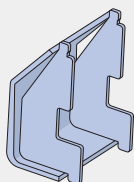
weight (kg)
0.70
6.98

DokMaxEco wedged clamp



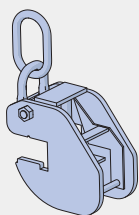
weight (kg)
1.20

Adapter



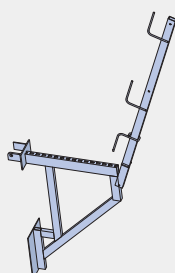
weight (kg)
0.62

DokMaxEco lifting hook



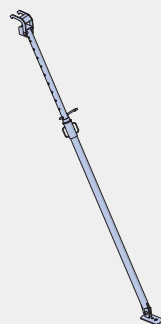
weight (kg)
7.67

DokMaxEco bracket



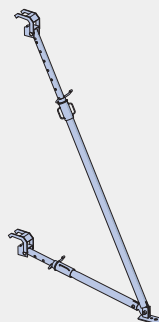
weight (kg)
8.73

DokMaxEco panel strut 260



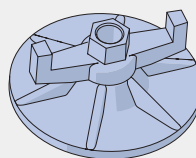
weight (kg)
16.62

DokMaxEco panel strut 340



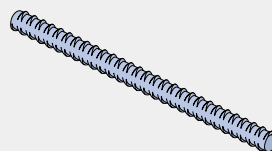
weight (kg)
33.50

DokMaxEco superplate 100



dimensions	weight (kg)
15	1.22

DokMax anchor

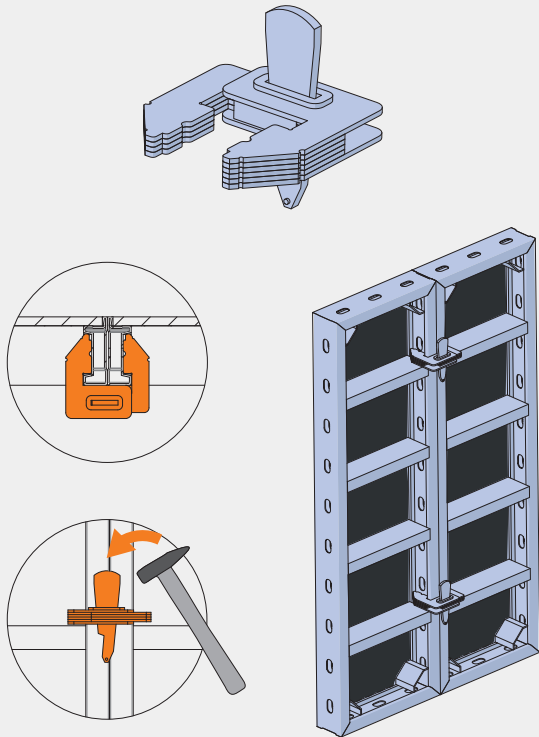


dimensions	weight (kg)
0.50 m	0.80
0.75 m	1.20
1.00 m	1.60
1.25 m	2.00
1.50 m	2.40
1.75 m	2.80
2.00 m	3.20

CONNECTING DOKMAXECO FORMWORK PANELS

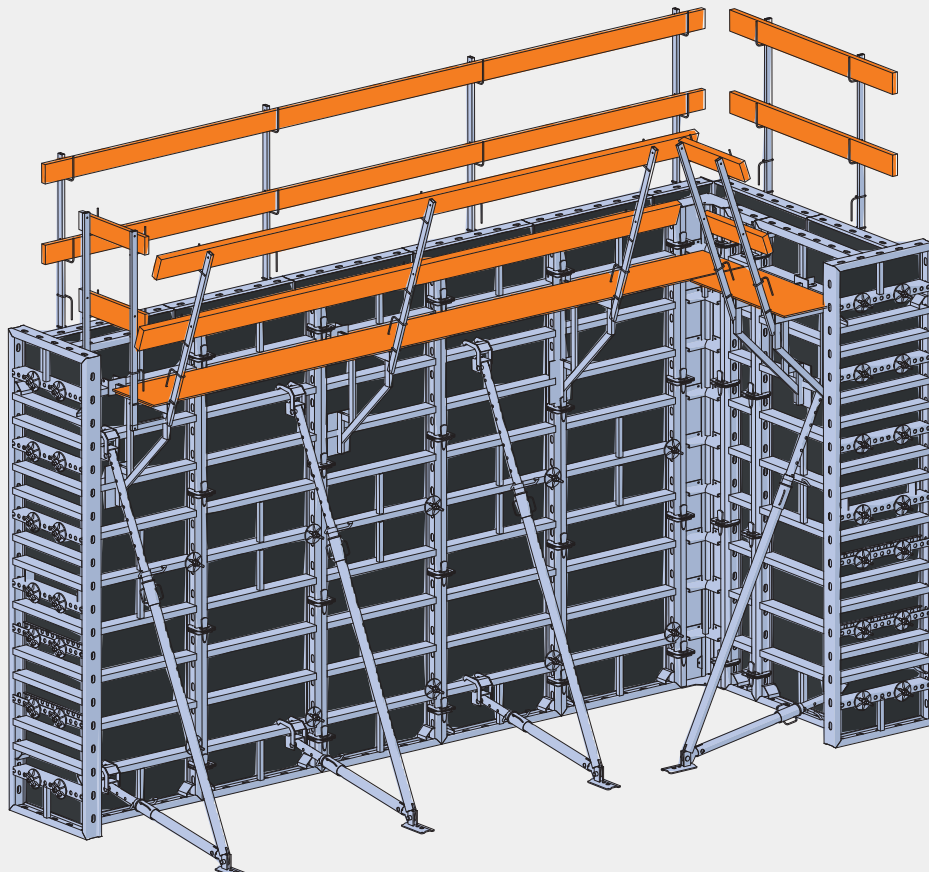
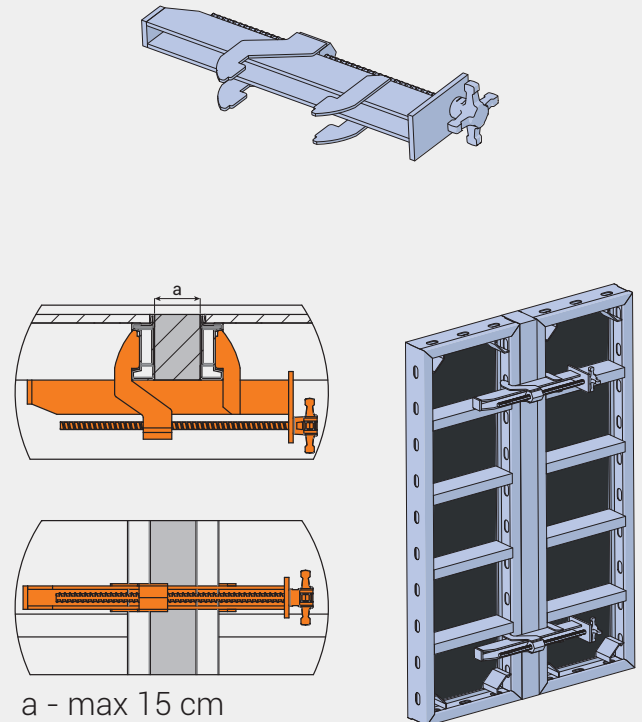
Clamping

Due to the continuous slots located along the entire profile of the panel, the DokMaxEco clamp can be easily installed in any place, with a hammer strike. Consequently, connecting panels is really quick and does not require special tools.



Closures

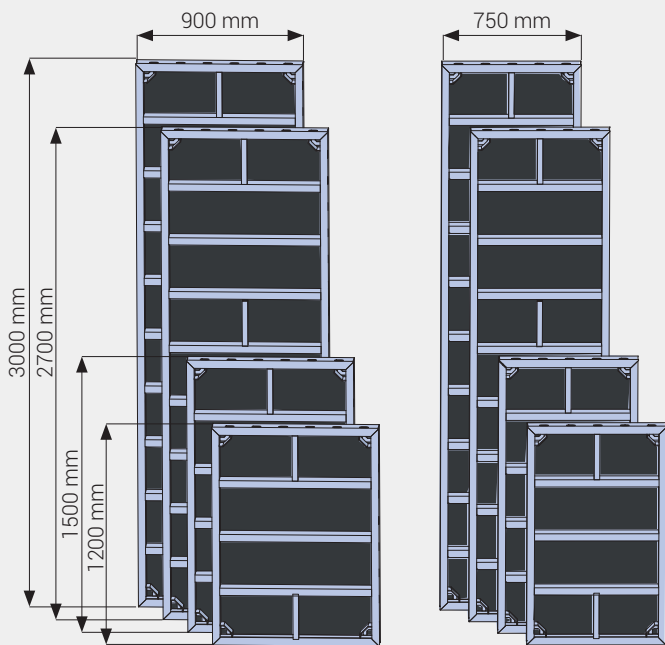
In places where it is impractical to join two panels, infills are used. The infills are made of structural wood and clamped by the adjustable clamp.



The heights and widths of DokMaxEco formwork are distributed incrementally, so that a small number of different sizes of formwork enables great variety, facilitates planning and speeds up assembly.

- 5 different panel widths
- 4 different panel heights

Standard panels

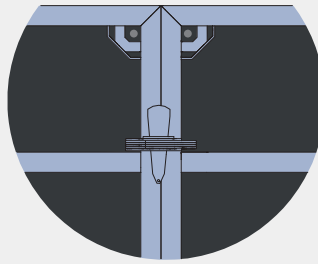


Uni panels

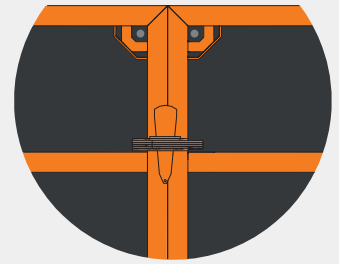
The arrangement between the holes on Uni DokMaxEco panels makes these formwork panels specially adapted for efficient formation of:

- corners
- wall joints
- wall ends
- columns

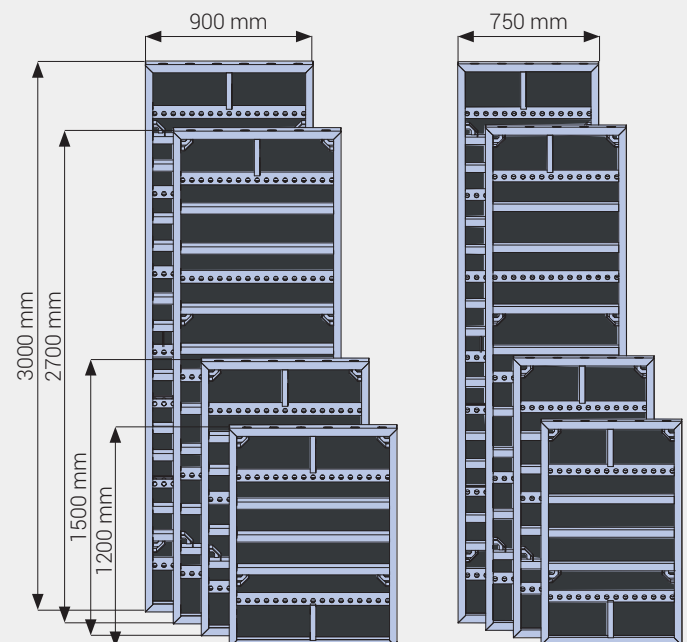
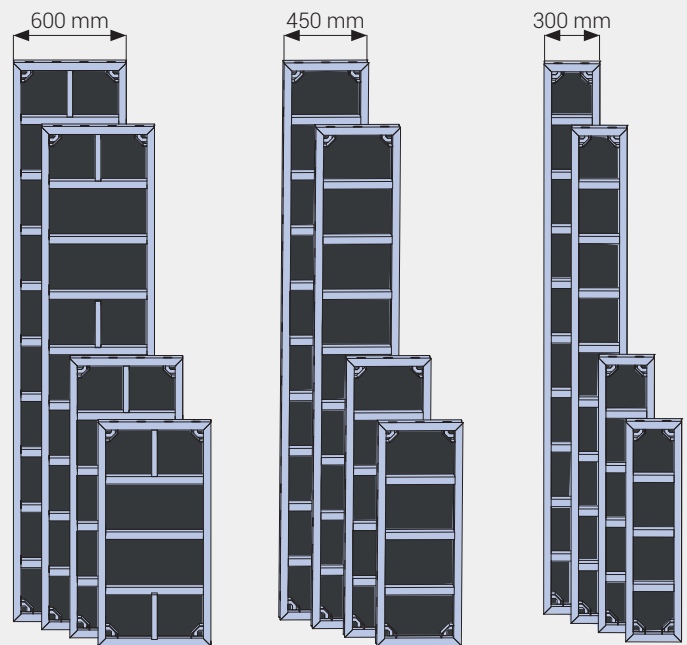
For each panel type and height, there are two finishing options:



Hot galvanized



Plasticized



EXTRA LIGHT DOKMAXECO FORMWORK SYSTEM

A tried-and-tested, manually portable formwork system for foundations, walls and columns.

The extra light formwork system DokMaxEco is a complete system that includes the associated parts and enables the perfect quality of making concrete structures without the use of a crane. The sufficient load capacity and long service life of the DokMaxEco system make it a cost-effective solution.

Satisfactory carrying capacity

- 60 kN/m² fresh concrete pressure up to 3.00 m
- 40 kN/m² fresh concrete pressure up to 4.50 m
- can be vertically stacked up to 4.50 m using just one connection
- high-quality coated plywood, 15 mm thick. The coat weight is 240 g/m².

Cost-effective

- manually portable formwork reduces the use of cranes
- a large number of possible cycles of use means lower costs
- the possibility of retrofitting and cleaning also reduces costs
- galvanized or plasticized steel frames ensure extended service life
- the high quality of concrete surface reduces the volume of finishing works

Simple handling and planning

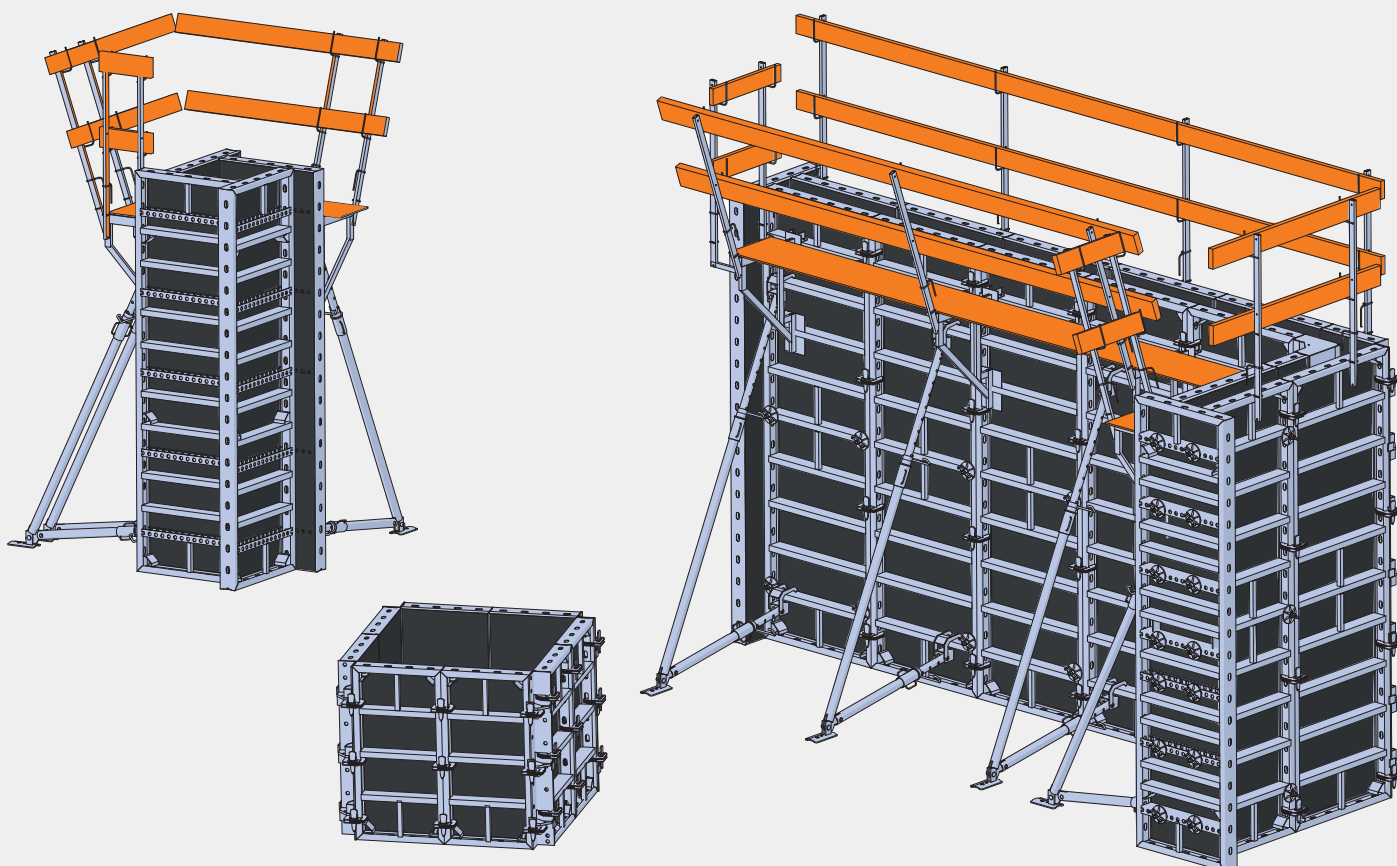
- all connecting and auxiliary parts are easily inserted into the slots provided for this purpose and are quickly clamped. Consequently, the efficiency of assembly is raised to a very high level.
- cleverly planned and coordinated formwork widths enable optimal adaptation to each structure.

Safe use

- struts, stiffeners and other accessories enable safe and easy assembly and disassembly

Possibilities of using the DokMaxEco system:

- walls formation
- columns formation
- foundation formation





www.oplate-situm.com

DokMaxEco formwork



ŠITUM FORMWORK ZAGREB WAREHOUSE

☎ +385 (0)1 2090 333

☎ +385 (0)99 3344 722

✉ prodaja@oplate-situm.com

📍 Oreškovićeve 12/A, 10000 Zagreb

Working hours:

MON-FRI 08:00-16:00

ŠITUM FORMWORK SPLIT WAREHOUSE

☎ +385 (0)21 220 220

✉ split@oplate-situm.com

📍 Solinska 49 (Dujmovača),
21000 Split

Working hours:

MON-FRI 07:00-15:00

ŠITUM FORMWORK PRODUCTION PLANT CISTA PROVO

☎ +385 (0)21 720 087

✉ ured@oplate-situm.com

✉ info@oplate-situm.com

📍 Čubića put 12, 21256 Cista Provo

Working hours:

MON-FRI 08:00-16:00